

PROJECT
BALLIEMEANOCH PUMPED STORAGE HYDRO

CLIENT
ILI (Borders PSH) Ltd.

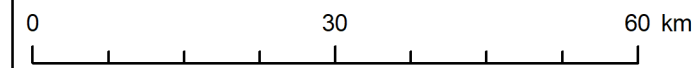
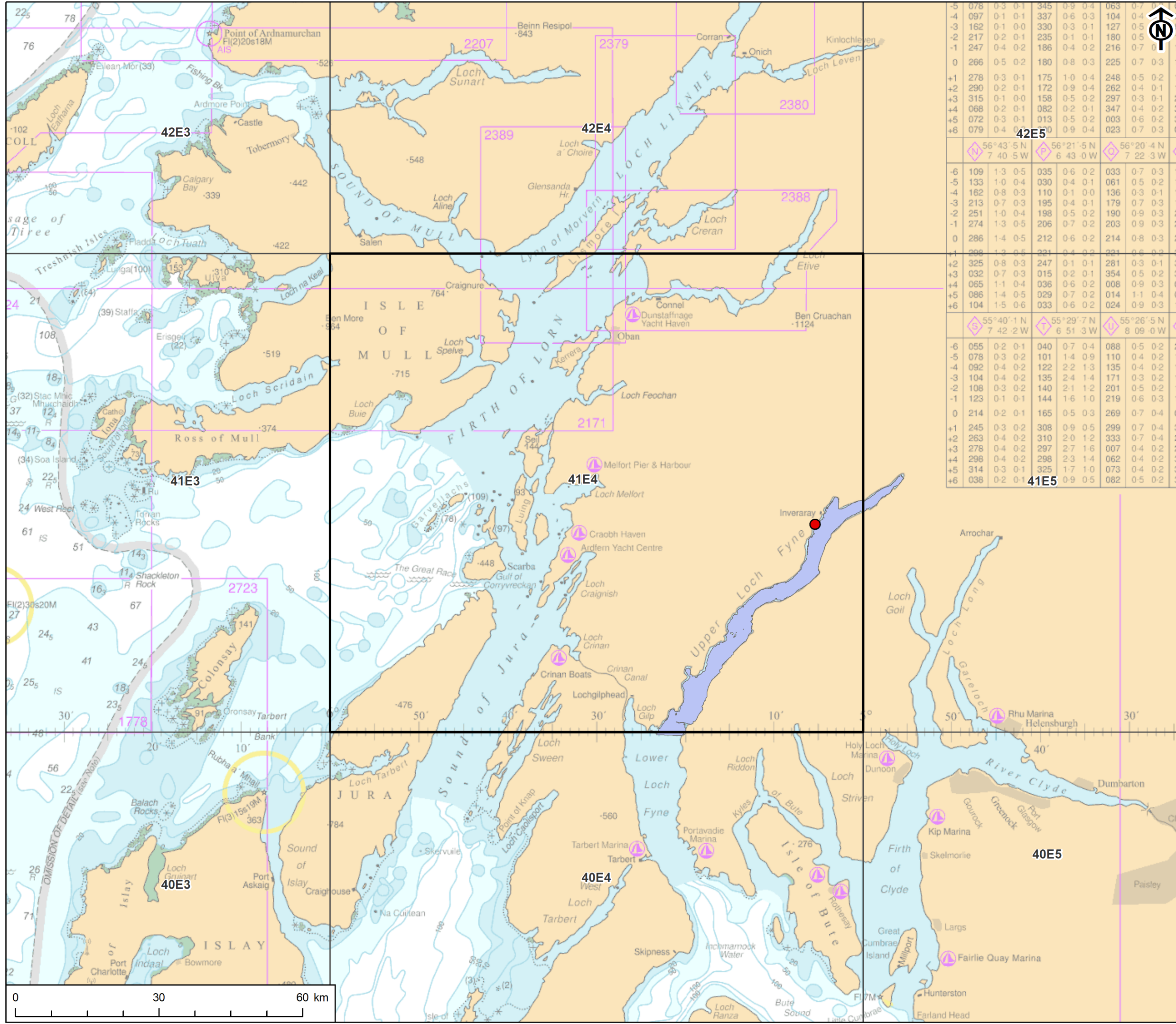
- KEY
- Marine Facility
 - Commercial Fisheries Study
 - ICES Rectangles
 - Upper Loch Fyne and Loch Goil Nature Conservation Marine Protected Area

- 6NM
- - - 12NM

	56°43'5 N 7 40 5 W	56°21'5 N 6 43 0 W	56°20'4 N 7 22 3 W
-6	109	133	104
-5	133	104	104
-4	162	083	127
-3	217	021	180
-2	247	042	216
-1	266	052	225
0	278	031	248
+1	290	021	262
+2	315	010	297
+3	068	021	347
+4	072	031	003
+5	079	040	023
+6			
	55°40'1 N 7 42 2 W	55°29'7 N 6 51 3 W	55°26'5 N 8 09 0 W
-6	055	040	088
-5	078	032	110
-4	092	042	135
-3	104	042	171
-2	108	032	201
-1	123	011	219
0	214	021	269
+1	245	032	299
+2	263	042	333
+3	278	042	007
+4	298	042	062
+5	314	031	073
+6	038	021	082

Project Management Initials: CA Designer: LC Checked: SY Approved: CA

Scale @ A3 1:750,000



TITLE
FIGURE 20-4
UPPER LOCH FYNE AND LOCH GOIL NATURE
CONSERVATION MARINE PROTECTED AREA

REFERENCE
BM_231102_EIA1.1_v1

SHEET NUMBER
1 of 1

DATE
02/11/23

This drawing has been produced for the use of AECOM's client. It may not be used, modified or relied upon by third parties, except as agreed by AECOM or as required by law. AECOM accepts no responsibility, and denies any liability whatsoever, to any party that uses or relies upon this drawing without AECOM's express written consent. All dimensions are indicative and in metres unless otherwise noted. Do not scale this document.